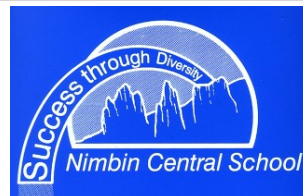


**Principal:** Ms Cath Marshall  
**Phone:** 66891355 **Fax:** 66891035  
**Address:** 23A Thorburn St Nimbin 2480  
**Email:** [nimbin-c.school@det.nsw.edu.au](mailto:nimbin-c.school@det.nsw.edu.au)

Week 10  
 Term 3



### From the Principal

At the end of a big Term 3 I would like to begin by congratulating all our staff and students on their achievements, participation in a wide range of events and activities and general enthusiasm and engagement in the teaching and learning taking place at Nimbin Central School over the term.

The active engagement in a number of events outside the school by our students and the staff enthusiasm, particularly around Professional Learning, have been commented upon in a highly favourable fashion. It makes me proud, as usual, to be a part of Nimbin Central School.

It was wonderful to see so many community members, past and present, at the Nimbin Show last weekend. It is a great opportunity for all facets of the community to come together and enjoy the exhibits, events and general fun. Another chance for me to appreciate the spirit and sense of community that we are so fortunate to have here in Nimbin.

This week we are celebrating and congratulating our graduating Year 12 students at their formal Farewell Assembly. They are all to be congratulated on their achievements and Graduation after 12 years of schooling. I look forward to celebrating this with them after the formal HSC examinations next term.

We are also busy putting together our Secondary timetable for next year, mindful that we 'rollover' to the new year in Week 6 next term. Please speak to your Year 8, 9, 10 or 11 students regarding their subject choices and direct them to staff with any enquiries they, or you, may have.

I wish you all a happy, safe and well-earned break. I hope we get some rain!

*Cath Marshall*



### IMPORTANT DATES:

**Sunday 6th October - Daylight Saving commences**

**Monday 14th October  
 School Returns**

**Monday 21st October - Interrelate Workshop 1 - Yrs 5/6 12-1.30pm**

**Sunday 27th October - Car Boot Market Day in the MPU from 8am**

**Monday 28th October - Interrelate Workshop 2 - Yrs 5/6 12-1.30pm**

**Tuesday 29th October - UniBound Year 6**

**Thursday 31st October - Kindy Orientation from 9.30 - 11.15am**

**P & C Meeting on Tuesday  
 29th October from 2-3pm**

**NCS Newsletter Team**  
**Design & Editing:**  
 Sue Willis  
**Proof Reading:**  
 Christine Riley



## School Enrolment Policy

### ***Information for Parents***

The *Enrolment of Students in NSW Government Schools* policy is in place to assist schools to meet their obligations under the *Education Act 1990* - to ensure that every student has a place at their local school. The policy also communicates to staff and the community a transparent enrolment process. This year there has been amendments to the policy.

#### Why was the enrolment policy revised?

Across the State, many communities are changing. Some are growing at rates never seen before. Some schools that used to be able to accept out-of-area enrolments, no longer have the room to do so.

#### What are the changes?

##### **The Enrolment Cap**

The enrolment cap is the number of students that can be enrolled at a school based on the school's permanent accommodation. The enrolment cap tells us whether the school may or may not have the capacity to accept non-local enrolments. It is not a target or limit on the number of local enrolments a school can take.

At Nimbin Central School we have an enrolment cap of 497 students based on our 23 permanent classrooms.

##### **The Enrolment Buffer**

Within a school's enrolment cap, a number of enrolment places (the buffer) must be kept aside for local students who may enrol during the year. For this reason, a school will not accept non-local students once they reach their buffer, unless there are exceptional circumstances.

Based on historical enrolment trends, the school's buffer is currently set at 350 students.

As Nimbin Central School's current enrolment is 255 (and hence not near the enrolment cap set for it), we are in a position to accept any non-local enrolments that may come to us.

##### **The Enrolment of Siblings**

It is important to note that if this school enrolls an out-of-area student, it DOES NOT guarantee the future enrolment of his or her siblings. If at the time we are not near the buffer, siblings should be able to be enrolled. If the school is nearing its buffer, the enrolment panel will consider the enrolment, with priority given to them. If the school has reached its enrolment cap it will not be able to accept non-local enrolment applications unless there are exceptional circumstances.

It is important to reiterate that the enrolment cap does not impact on the number of local students that can be enrolled at our school. Nimbin Central School will continue to enrol students who live in our local intake area, regardless of the school's cap status.

For further information, please see the attached *Enrolment Policy - Information for Parents* or make an appointment to speak with Cath Marshall, Principal.


 | NSW Department of Education


120819\_49376

# Enrolment policy

## Information for parents

The Enrolment of Students in NSW Government Schools policy is in place to assist schools to meet their obligations under the *Education Act 1990* - to ensure that every student has a place at their local school. The policy also communicates to staff and the community a transparent enrolment process.

### Why was the enrolment policy revised?

Across the state, many communities are changing. Some are growing at rates never seen before. Some schools that used to be able to accept out-of-area enrolments, no longer have the room to do so.

The revised policy is designed to support schools to manage all enrolment applications, encourage greater consistency in decision-making and make sure the enrolment choices are clear for parents.

### What are the changes?

#### The enrolment cap

The enrolment cap is the number of students that can be enrolled at a school based on the school's permanent accommodation. The enrolment cap tells us whether the school may or may not have the capacity to accept non-local enrolments. It is not a target or limit on the number of local enrolments a school can take.

Each school with a local intake area will have a cap set by the department from Term 4 2019.

Within the enrolment cap, a number of enrolment places (the buffer) must be kept aside for the likely number of local students who will need to enrol during the year. For this reason, a school will not take non-local students once they reach their buffer, unless there are exceptional circumstances.

#### 100-point residential address check

Parents planning to enrol their child at a school that is near or at their buffer or cap will be asked to complete the 100-point residential address check to confirm they live within the school's designated intake area. This means you will need to provide documents to verify your child's current address.

So that schools only seek information relevant to your child's enrolment, a list of approved documents for the residential address check is available from the school or the department's website at <https://education.nsw.gov.au/policy-library/policies/enrolment-of-students-in-nsw-government-schools>.

#### Selection criteria for non-local enrolment

Sibling enrolments are now clearly prioritised (where possible) and selection criteria for non-local enrolment will not include student ability, performance or achievement.

## What has not changed?

Schools will continue to enrol students who live in their local intake area, regardless of the school's cap status.

There are no changes to enrolment rights of siblings of non-local students. In schools with available places, each enrolment application is considered on its merits, including if siblings currently attend the school. If the school is below capacity, out-of-area applications for siblings of current students will be given enrolment priority.

Schools will continue to provide families with support and advice during the enrolment process, including assessment of exceptional and compelling circumstances particularly for vulnerable students and their families.

Schools will also continue to apply the policy fairly and consistently using transparent and accountable processes when making decisions around enrolment applications. Parents have a right to appeal to determine whether the stated processes have been applied in a procedurally fair manner.

## But what do the changes mean for me?

### What if my child is already enrolled but we do not live in that school's intake area?

Your child will remain enrolled at the school as the revised policy does not affect students already enrolled in NSW Government schools.

**We were in area when my child was enrolled in the school. The department has since changed the school's boundary and our residence is now out of area. I have other children and I want them all to go to the same school.**

### What are my options?

At times it is necessary for the department to make adjustments to a school's local enrolment intake area. This could mean a family with a child/children already enrolled is then outside the local intake area. When this happens, the family will still be able to enrol siblings together at the school, regardless of whether the school is over the buffer or cap.

### I already have a child enrolled as an out-of-area student in a NSW Government school. Can I enrol my other children at that school too?

This will depend on the capacity of the school:

- If the school is **not near its buffer**, then siblings should be able to be enrolled at the school. In fact, siblings of students currently enrolled will be prioritised, where possible, over other non-local enrolment applications.
- If the school is **nearing its buffer**, then the school will form a non-local enrolment panel. The panel considers non-local enrolment applications when the number of non-local applications received exceeds the number of places available below the buffer. Again, in this instance, siblings of students currently enrolled will be prioritised, where possible, over other non-local enrolment applications.
- If the school is **at capacity** they will not accept non-local enrolment applications unless there are exceptional circumstances.

### I have already accepted an offer for my child to attend a school in 2020 that is not my local school. What happens now?

The enrolment will proceed. Non-local enrolments accepted before Term 4 2019 for students starting in 2020 should not be affected.

### What is the criteria for enrolment in a school that is not my local school?

Schools that are able to accept non-local enrolment applications establish a non-local enrolment selection panel, if demand exceeds the number of places below the school's buffer.

Schools are required to make the selection criteria available to the school community.

### My circumstances are challenging and I think this school is best for my child. We live outside the school's intake area. What should I do?

We understand that not everyone's circumstances are the same, and that there are instances where exceptional circumstances will need to be considered.

Your circumstances should be discussed with the principal of your local school who can assist you to negotiate an out-of-area enrolment if there are exceptional and compelling circumstances.

#### Contact

For general enquiries contact: 1300 679 332 or email: [DoEinfo@det.nsw.edu.au](mailto:DoEinfo@det.nsw.edu.au)

For enrolment enquiries, speak to your local school.

Find school contact details at:

<https://education.nsw.gov.au/public-schools/going-to-a-public-school/finding-a-public-school>

**From the Deputy Principal**

Hi everyone,

It's been another busy term at Nimbin Central. So many events and activities it is hard to mention them all.

We've had the Primary Sports Carnival and the Sports Day at The Channon, Poetry Workshops in Secondary, the Byron Writers Festival, Year 9 Work Experience, the Parent Focus Group, an Aboriginal Education Community Consultation Meeting, Peer Support in Primary and Secondary, Kindy Aged Care visits, Wellbeing Day, the Gamechanger Challenge and who could forget the Astronomy Night.

In between there were some classes with teaching and learning! Project Based Learning is now in full swing across Years 7 and 8. It is great to see students engaged in developing their ideas using the 4C's (communication, collaboration, creativity and critical thinking). Project Based Learning will expand to six periods per week for Years 7 and 8 in the new timetable from Week 6 next term. The Year 3/4 and 5/6 classes will also be engaging in their first Projects next term, with a view to having Project Based Learning embedded into Primary classes in 2020.

Also, a big thank you to students, parents and carers with their cooperation this term with getting to school on time and bringing a note when they are late. It really does make a big difference to the smooth operation of the school and allows teachers and students to engage in education without unnecessary distractions.

On Thursday we will be saying goodbye to our current Year 12 cohort at their final Assembly from 10.30am. They have been a fantastic cohort and we will be sad to see them go! We wish them all the best for their future endeavours, confident in the knowledge that their education at Nimbin Central has given them a great preparation as they move into adulthood.

*Andrew Grimshaw*

**Secondary students going into Town in the morning**

A small number of secondary students choose to go into town when they get off their school bus in the morning.

If your child/young person chooses to do this, you should be aware that we have no duty of care for these students until they return to school. Accordingly this practice is discouraged.

Could you please discuss this matter with your child/young person.

Please do not hesitate to contact me with any enquiries regarding this matter.

*Cath Marshall*

**NIMBIN CENTRAL SCHOOL IS NOW ON FACEBOOK. PLEASE FIND US AND LIKE US:**

**[www.facebook.com/nimbincentralschool](http://www.facebook.com/nimbincentralschool)**



**K—6 NEWS****Kindergarten Excursions**

Kindergarten Community Connection excursions had us out and about the Village, visiting with the Preschool and the Nimbin Health Aged Care Residents.

Kindergarten students were very excited to reconnect with the Preschool staff, peers and Gidget the dog. The Kindergarten students showcased their literacy skills by reading to their younger peers. Nimbin Central School's youngest learners demonstrated their Bundjalung language learning by singing and actioning Heads (Bawurr), Shoulders (Walgan), Knees (Gindal) and Toes (Jinung). Also Eyes (Jeo), Ears (Binung), Mouth (Jerng) and Nose (Murru).



Our visit with the elderly residents at Nimbin Health Services provided the Kindergarten students an opportunity to establish connections with their living history. The elderly clients highlighted perspectives on historical changes from the past where students verbally compared these to the present around topics such as where they were born, school, games and family life.

Both visits were a wonderful opportunity to build community relationships and we hope to continue them next term.

**Preschool Library Visit**

The children and staff had a wonderful visit to our Library from the Nimbin Pre-school. We celebrated National Reading Hour by making a 'Perfect Planet Pie' using Kim Michelle Toft's book; singing the alphabet song and 'Puff the Magic Dragon' and making 'happy reading bookmarks'. All 17 students borrowed a picture book each to keep at the pre-school and will return it next visit in Term 4.

**Channon Teams Day**

The annual Channon Teams Day has been another successful sporting experience for our students. They formed collaborative stage teams and enthusiastically participated in games including Danish Rounders and Soccer. This year for the first time the day was supported by soccer coaching sessions provided by Liverpool United Soccer Coaching Clinic. This was a fantastic opportunity for our students to refine skills and learn new tactics which they could immediately apply during their games.

**K—6 NEWS (Cont)****Byron Bay Excursion**

The Early Stage 1 and Stage 2 students participated in their excursion to Byron Bay Lighthouse on Monday. They were all very excited and had high expectations in seeing the spectacular sites both on land and ocean.

Our students engaged in small group rotation activities that entailed mapping and games played by the past lighthouse keepers and their families. The headland walking trail had some lucky students observe a pod of dolphins and passing sea vessels. Another activity involved an oral story telling of the history of the lighthouse and traditional Aboriginal land owners. The most anticipated activity of the day was the Lighthouse tour to the top of the Lighthouse.

**Big Scrub Public Speaking Competition**

Two of our students, Siena Gundlach from 3/4 class and Grace Russell in 5/6 class competed in The Big Scrub Public Speaking Competition at Jiggi with the support of their parents/caregivers. Congratulations and thank you for representing our school and challenging yourselves to reach your goals.

**THANK YOU, THANK YOU, THANK YOU!**

To the Parents, Carers and community members who have given their time this term to support our students to reach their potential.

Your effort to attend assemblies, sporting events, P&C participation, working in the canteen and in classrooms is a valuable resource to our school. Your contributions are a way to instil student pride, elevate interest in schooling, increase student achievement, and enhance a sense of community and commitment.

Thank you to Nimbin Central staff for your continued effort in ensuring all our students are provided ongoing access, support and success to achieve their full potential.

As always if you have any concerns or ideas about how we can make your child's experience at Nimbin a more happy and positive learning experience, please let us know.

*The Primary Staff*

**North Coast PSSA 2019 Athletics Championships**

Daniel and Mikayla Frey recently competed at the North Coast PSSA Athletics Championships, and were both selected for the North Coast Regional Team to compete at the NSW PSSA State Championships on 6-7 November 2019.



Daniel will compete in the Boys 12-13 Years Shot Put, and Mikayla in the Girls 10 Years 100m and 200m sprints, also the 800m run.

**P & C NEWS**

The P&C would like to congratulate Mikayla and Daniel Frey on their recent outstanding efforts and results as representatives of Nimbin Central School, in both the academic and sporting arenas.

The P&C is proud to support our students and we would like to show our appreciation by making a small contribution to both students' upcoming ventures.

Mikayla and Daniel will be receiving \$50 each to assist with their time away at the PSSA State Athletics Championships to be held at Sydney Olympic Park on the 6<sup>th</sup> and 7<sup>th</sup> of November.

Mikayla will also be representing Nimbin Central at the 2019 Premiers Spelling Bee to be held in Sydney on the 8<sup>th</sup> November and we would like to also donate a further \$50 to assist Mikayla with her trip.

It will be a very busy few days for both students and the P&C would like to wish them every success.

We would also like to wish all students, families and staff a happy and safe holiday break.



*Shizuka Oki*

## Food Tech & Agriculture

Year 7.1 have been working on a collaborative project that will eventually see our school produce grown, harvested, processed, cooked and packaged for sale at our school.

Jee Jee (one of our School Learning Support Officers) has come to help us prepare our traditional and non-traditional no-dig garden beds, and we are currently growing tomatoes and basil without the use of chemicals to produce our own super yummy Tomato Relish and Basil Pesto. All going well we will have it available for purchase in about six weeks time.

We will keep you updated with the progress of our garden project in the coming weeks.....meanwhile happy gardening from the 7.1 gardeners, Jee Jee, Felicity and Anthony Neenan.



### Principal's Awards



### Workers of the Week - Week 9

### Spelling Bee Awards

**CAREERS NEWS**

Information on the following areas is available from your Careers Adviser.

- University of The Sunshine Coast scholarships are now available. Any Year 12 students interested in applying for this institution should see Mr Chaseling.
- Any indigenous High School Students in Years 10 -12 who are interested in pursuing a career in Engineering, could you please see Mr Chaseling ASAP for information on an Engineering School to be held in January 2020. This would be a great opportunity for relevant students.

*Mark Chaseling*

# Nimbin Central School Car Boot Sale

October 27th 8am-1pm

Face Painting  
BBQ Music Jumping  
Cold Drinks Castle

**Book a Stall**

Call Fiona

**0414 623 603**

Each \$10 Stall fee will go towards  
our school's new Solar Panels



## Primary Polo School Shirt

Sizes 4-16 \$19.25

## Secondary Polo School Shirt

Sizes 10-18 \$22.00

## Senior Secondary Polo School Shirt

Sizes 10-18 \$22.00

Organic Cotton Polo Shirt sold  
at canteen on Friday mornings  
by P&C \$24.00 (S) \$29 (L)

## NIMBIN CENTRAL SCHOOL HATS

AVAILABLE AT THE OFFICE.  
100% COTTON  
\$15.65



**GO4FUN**  
HEALTHY ACTIVE HAPPY KIDS



**Go4Fun - FREE fun program to help kids become fitter, healthier and happier!**

**Do you have children between 7-13 years old?**

The Go4Fun program is a free healthy lifestyle program to improve health, fitness, self-esteem and confidence in children above a healthy weight.

Go4Fun runs for 10 weeks over the school term for children, between the ages of 7-13 years and their parents. Sessions include games, activities, tips on healthy food, label reading, portion sizes plus much more!

Term 4 2019, Go4Fun will be held in Goonellabah.

To find out more and register visit  
[www.go4fun.com.au](http://www.go4fun.com.au) or contact us on 1800 780 900.



Northern NSW Local Health District

Get out your wands & board your brooms for a special Storytime.

# Witches Brew & Wizards Potion

Goonellabah Library - Tuesday 1 October

Lismore Library - Wednesday 2 and Thursday 3 October.

All sessions begin at 10.30am.

We will be making  
Wizard Fizz and Witches Brew!  
Please wear old clothing.  
If you have concerns about  
ingredients, please contact the  
library for information.



Storytime is for pre-schoolers with  
their parent or carer.  
Older siblings are welcome to join in.  
You do not have to be  
a library member to attend.

Richmond Tweed Regional Library  
Connect. Discover. Escape.

Lismore Library  
110 Magellan St  
Lismore NSW  
02 6621 2464

Goonellabah Library  
27 Oliver Avenue  
Goonellabah NSW  
02 6625 1235

Storytime gets YUMMY with

# Edible Art



Goonellabah Library - Tuesday 8 October

Lismore Library - Wednesday 9 and Thursday 10 October.

All sessions begin at 10.30am.

Songs and stories about food, paper placemat craft and a special edible surprise to take home!  
We will be using bread, milk and food colouring. If you have allergy concerns please contact the library.

Storytime is for pre-schoolers with their parent or carer. Older siblings are welcome to join in.

You do not have to be a library member to attend.

Richmond Tweed Regional Library  
Connect. Discover. Escape.

Lismore Library  
110 Magellan St  
Lismore NSW  
02 6621 2464

Goonellabah Library  
27 Oliver Avenue  
Goonellabah NSW  
02 6625 1235

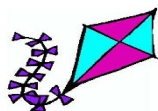
## Nimbin Holiday Club Spring Program



for 5 - 12 year olds.  
For bookings phone 66891692,  
text Kylie on 0487576281

or visit Nimbin Neighbourhood and Information Centre  
This program is brought to you by Nimbin Neighbourhood &  
Information Centre and funded by NSW DEC

Date	Program	Cost
Tuesday 1 <sup>st</sup> October	<b>Nimbin Community School, Park and Skate Park</b> All our usual fun and games, arts/crafts, videos and park play as well as going to the spring art exhibition to get some inspiration for making art with recycled materials	\$12
Thursday 3 <sup>rd</sup> October	<b>Excursion – Ballina rockpools and waterslide</b> We are off to Ballina for a stroll along the beach to explore the rockpools and then heading to Ballina pool and waterslides	\$25
Tuesday 8 <sup>th</sup> October	<b>Nimbin Community School, Park and Skate Park</b> All our usual fun and games, arts/crafts, videos and park play as well as making kites and other flying things, like paper aeroplanes	\$12
Thursday 10 <sup>th</sup> October	<b>Nimbin Community School, Park and Skate Park</b> All our usual fun and games, arts/crafts, videos and park play as well as making frisbees at the mobile library and practicing our hula hooping skills at the park	\$12



# LISMORE COLOUR EXPLOSION FUN RUN



EARLY BIRD PRESALE  
REGISTER NOW

27  
OCTOBER  
2019

You don't need to head to the Gold Coast, it's right here in Lismore. Come and join the 2nd Annual Lismore Colour Explosion Fun Run...the colour craze that's sweeping the nation!

You can run, walk, skip or crawl... it's all about being outside, having fun with friends and family and getting plastered in colour. Enter now!

3KM ALL TERRAIN  
COURSE WINDING  
THROUGH ST JOHN'S  
COLLEGE WOODLAWN

DJ, JUMPING CASTLE,  
GIANT SLIDE PLUS MORE  
COFFEE, FOOD AND  
REFRESHMENTS  
RURAL FIRE BRIGADE

To find out more and to register, visit us online:

[www.lismorecolourexplosionfunrun.com.au](http://www.lismorecolourexplosionfunrun.com.au)

## Nimbin Central School invites you to 7 Deeds for 7 Dwarfs A fractured fairytale musical

Thursday, 14 November

Matinee - 11.30am to 1.30pm

Evening - 6.00pm to 8.00pm

(30min intermission)

Venue - NCS MPU

Tickets - at the door

\$7 per adult

\$3 per child (4-18yrs)

\$20 per family

Sausage sizzle from 5.00pm.

Coffee and cake available  
during intermission.

All proceeds go towards the  
Nimbin Central School  
Solar Panel Project.



Lismore City Council invites you to

Water Wednesday – at Rocky Creek Dam

October 9<sup>th</sup> - 10 to 2pm

Free School Holiday family fun

Come out to Rocky Creek Dam picnic area to explore, create and learn through a series of outdoor activities about water, water saving, our water catchment and the plants and animals of the Big Scrub.

Ample parking is available or catch the free bus from the Lismore Visitor Centre, it leaves at 9.30 and will be back in Lismore 1.30 pm – bus bookings essential ring 1300 87 83 87.

Children must be accompanied by a supervised adult at all times.

Please be safe and aware when walking in the carpark.

Bring a hat, sunscreen and drinking water. You may also like to bring a picnic to have with beautiful dam views or amongst the rainforest.

*Normally the School Holiday fun is at the Lismore Recycling and Recovery Centre but as this is not possible at the moment, we thought it was a great opportunity to run the event at one of Lismore's special places – Rocky Creek Dam. This also gives us a chance to think more about where our water comes from and using it wisely as well as taking a closer look at the plants and animals of the Big Scrub.*

Free fun on the day includes:

1. Nature activities: Take a close-up look at the rainforest plants of the Big Scrub.
2. Backyard birds: Identify local birds and their calls. Come along for info and get involved in the Aussie backyard bird count.
3. Koala watch and habitats: When does a koala need our help? Where does our wildlife live and why?
4. Catchment creation: Why do we need trees? Find out in this great learning activity.
5. Water walk: Take a guided walk across the dam wall. How does the water get from the dam to the tap and back?
6. Information Tent: Ask about what's on and play the giant water-saving game.
7. 3D working Catchment Model: How can we help to keep the water clean and healthy?
8. Water science: Try some water experiments to make water lilies and giant bubbles.
9. Be waste wise: Draw your own design on a reusable bag to take home and shoot the 10c container basketball hoop!

*Lismore City Council is hosting Water Wednesday with support from the Lismore Rainforest Botanic Gardens, Friends of the Koala, Richmond Landcare, Rous County Council, Dorrourghby Environmental Education Centre and NE Waste*

**Barbara Jensen** | Environmental Strategies Officer – Education **Lismore City Council**

**Work days: Tuesdays, Wednesdays and Thursdays**

PO Box 23A, Lismore, 2480 | T 1300 87 83 87 or 6625 0419 [www.lismore.nsw.gov.au](http://www.lismore.nsw.gov.au)